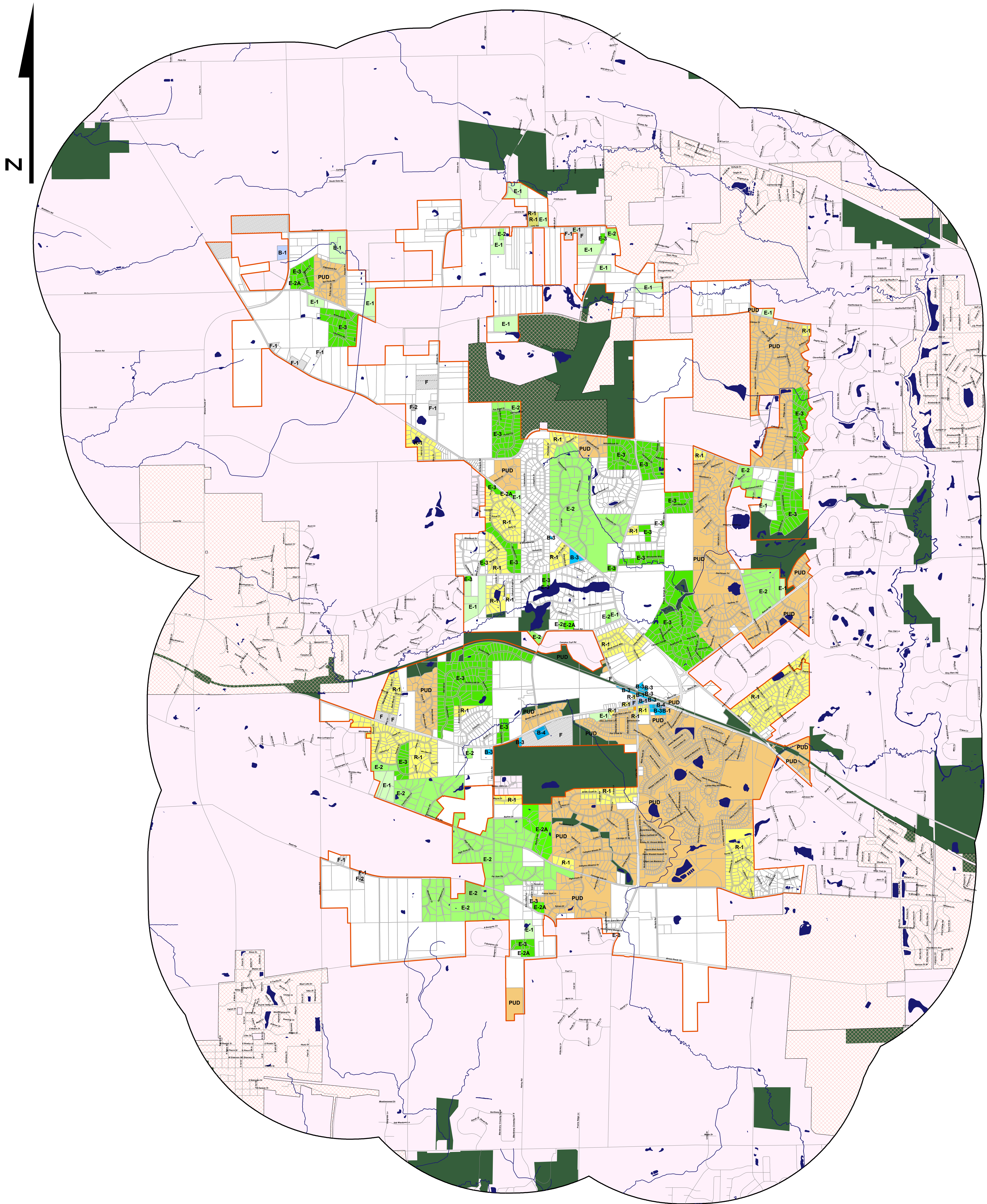
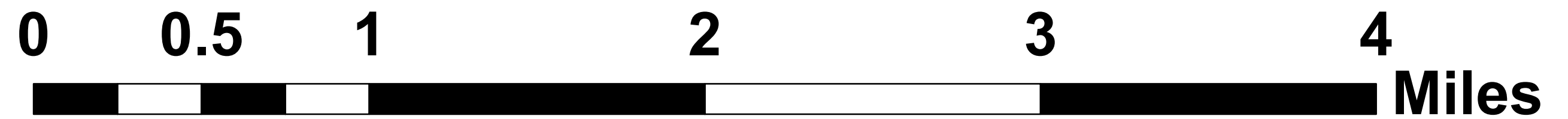


# Village of Campton Hills Zoning - December 2014



	F		Special Use
	F-1		Planning Area
	F-2		Village Boundary
	E-1		Roads
	E-2		Creeks
	E-2A		Lakes & Ponds
	E-3		Forest Preserves
	R-1		Other Municipalities
	R-7		Unincorporated Areas
	B-1		Parcels
	B-2		
	B-3		
	B-4		
	PUD		



Boundary, road, and parcel data provided by Kane County GIS Technologies, 3/28/2013; updated by CF Geographic LLC 5/1/2013 & 11/7/2014.

Zoning data provided by Kane County Development Department 4/3/2009; adapted by CF Geographics LLC 5/15/2009; changes enacted by ordinance as of 5/1/2013 & 10/7/2014.

Accuracy and completeness of data provided by Kane County GIS Technologies and CF Geographics LLC are not guaranteed, and this information shall not be used for engineering design or in place of on-site surveys.

© 2014, Village of Campton Hills & CF Geographics LLC. All rights reserved. This document may not be sold, distributed, or reproduced, in whole or in part, without express written permission of the Village of Campton Hills & CF Geographics LLC.